



MahaRERA Registration No:- P52100015703



**1 & 2 LUXURIOUS HOMES**

**Living at Mayuri Infinity is a Compliment to Elegant Engineering Ultra- Modern architecture of Living spaces comes handy to accommodate every measure of elite living that you could ask for 1&2 BHK Flats at Mayuri Infinity Suits all your kinds of need .So Enjoy your future in living spaces with all Amenities & strategic location**

**“Discover Enormous  
Apartment Living Lifestyle”**



# Amenities



**Amphithetre**



**Garden**



**Walking track**



**Toddler's play area**

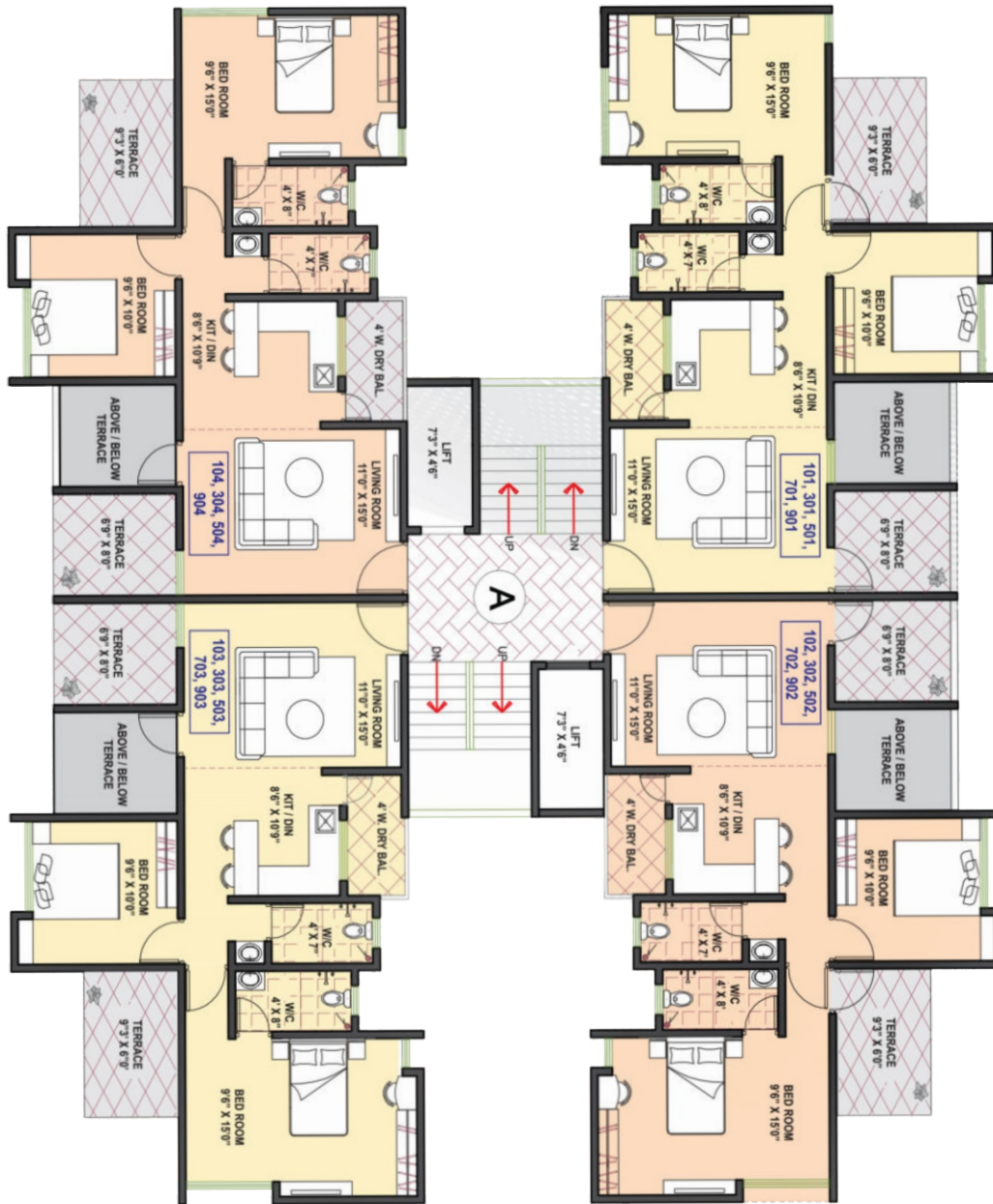


# 1 Bhk





2 Bhk



Carpet	Terrace Area	Open Balcony	Enclosed Balcony	Total Area
568.01	109.25	31.96	52.52	761.74

# FLOOR PLAN

## "A" wing

Typical - 1st, 3rd, 5th, 7th,  
9th & 11th floor Plan

**CARPET AREA STATEMENT (SQ.FT)**



Carpets	Terrace Area	Open Balcony	Enclosed Balcony	Total Area
568.01	54.03	31.96	52.52	706.52

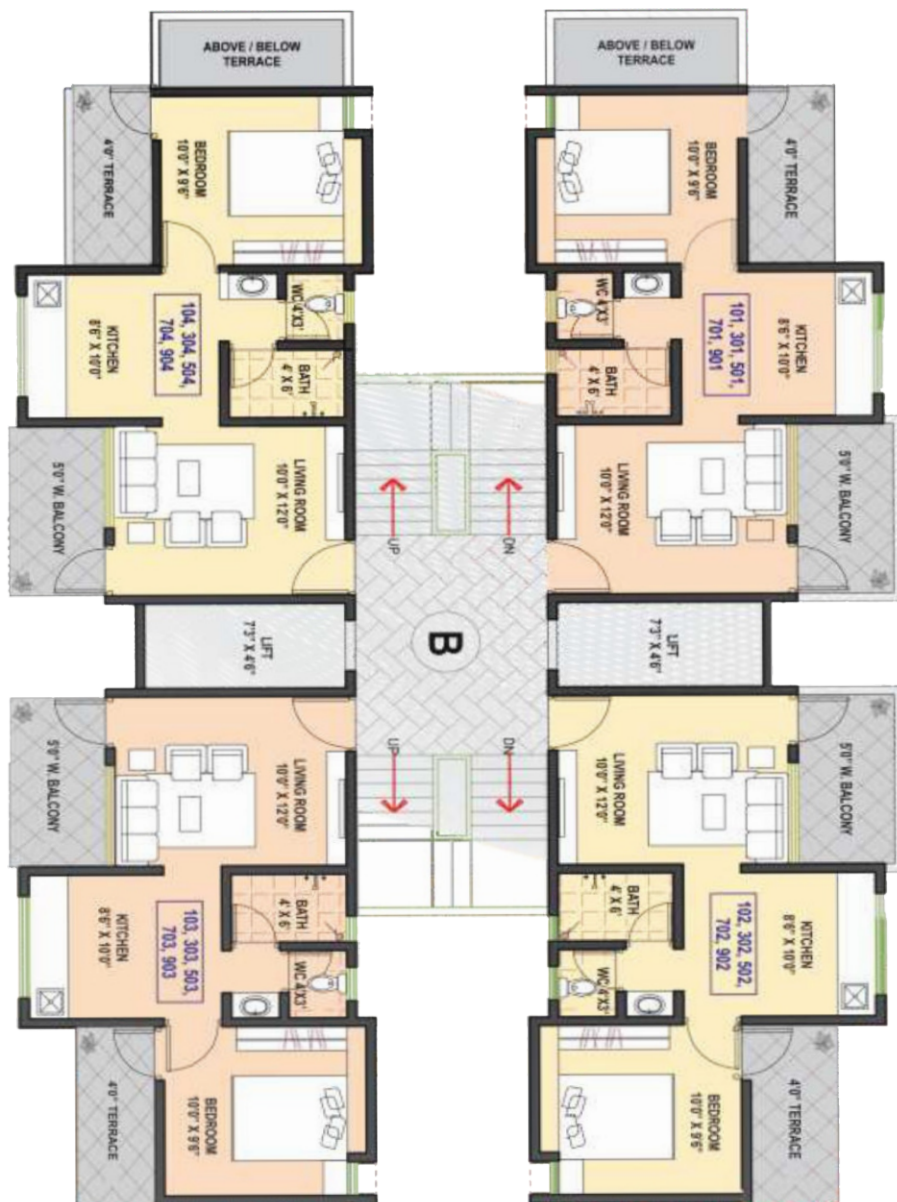
# FLOOR PLAN

## "A" wing

Typical - 2nd, 4th, 6th, 8th,  
& 10th floor Plan

CARPET AREA STATEMENT (SQ.FT)





Flat No.	Carpet	Terrace Area	Open Balcony	Enclosed Balcony	Total Area
101, 301, 501, 701, 901, 1101	331.44	40.14	49.83	33.36	454.77
102, 302, 502, 702, 902, 1102	331.44	40.14	49.83	33.36	454.77
103, 303, 503, 703, 903	331.44	40.14	49.83	33.36	454.77
104, 304, 504, 704, 904	331.44	40.14	49.83	33.36	454.77

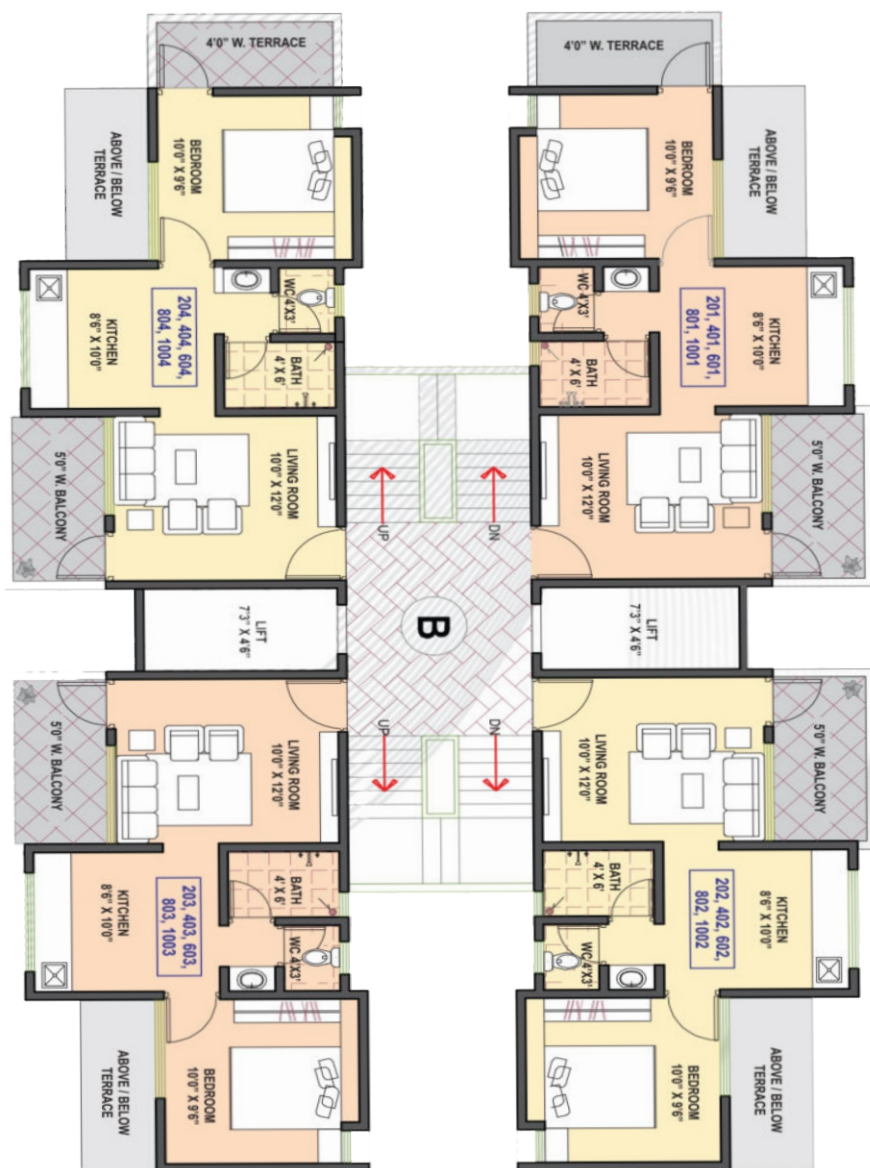
# FLOOR PLAN

## "B" wing

Typical - 1st, 3rd, 5th, 7th,  
9th & 11th floor Plan

**CARPET AREA STATEMENT (SQ.FT)**





# FLOOR PLAN

## "B" wing

Typical - 2nd, 4th, 6th, 8th,  
& 10th floor Plan

**CARPET AREA STATEMENT (SQ.FT)**

Flat No.	Carpet	Terrace Area	Open Balcony	Enclosed Balcony	Total Area
201, 401, 601, 801, 1001	331.44	40.14	49.83	33.36	454.77
202, 402, 602, 802, 1002	331.44	-----	49.83	33.36	414.60
203, 403, 603, 1003	331.44	-----	49.83	33.36	414.60
204, 404, 604, 804, 1004	331.44	40.14	49.83	33.36	454.77



## **Door:**

Attractive Main Entrances Door  
Laminated Door/ Flush Door \*  
Plywood Door frames of wall thickness  
in all Rooms



## **Window**

Three Track powder coated Aluminium Windows  
M.S. safety grills for Windows  
Granite Seal for Windows



## **Painting**

Superior Wall finish with oil Bond paint  
Superior Quality Acrylic  
(Acrylic Apex Eatenal walls)



## **Electrification**

Water Pump  
Concealed Poly cab electric Copper Wiring  
Premium Quality Moduler Switches /Vinay  
TV Points in living Rooms  
Telephone Points in living Rooms  
AC Points in Bedroom



## **Railing**

M.S Railings in Balcony & Terracos



## **Flooring**

24x24 Vitrified Tiles  
Anti Skid tiles for balconies / Terraces



# Specifications



## **Kitchen**

**Granite Kitchen Counter**

**Stainless Steel Sink**

**Provision for Water Purifier**

**Two Track Window**

**Dado Tiles**

## **Garden**

**Designer Name Plates**

**Water Harvesting System**

**Security Cameras At Common Area**

**Solar Water Heater**

**STP Tank**



## **Bathroom & Toilet's**

**Concealed plumbing GI / PVC Pipes**

**Provision For Water geyser**

**Provision For Exhaust Fan in Toilets Branded sanitary Ware**

**Designer Glazed Dado Tiles on wall upto 7 height**

**Granite Door Frame**

**CP Fittings Of Brand - Jaguar/Cera**

## **Common Amenities**

**Grand Entrance Gate**

**Entrance Security Cabin**

**Internal concrete / Colour Paving Blocks in Parking area**

**Designer Entrance Lobby**

**Fire Fighting System**

**Generator Backup for common Areas**

**Elegant Letter Boxes**

**Club House**

**Kids Play Area**



# **Specifications**

## Credits

**Architect : Mr. Santosh Pajgade**

**R.C.C: Mr. Ram Randhaware**

**Legal Ad: Mr. Parmeshwar Waghmare**



## Site Address

**Mayuri Infinity. 27/4. Undri, Near  
Tata Inora Park. Next to Mayuri  
Weigh Bridge. Pune- 411028**



## For Booking Contact

**+91 9096913600**

